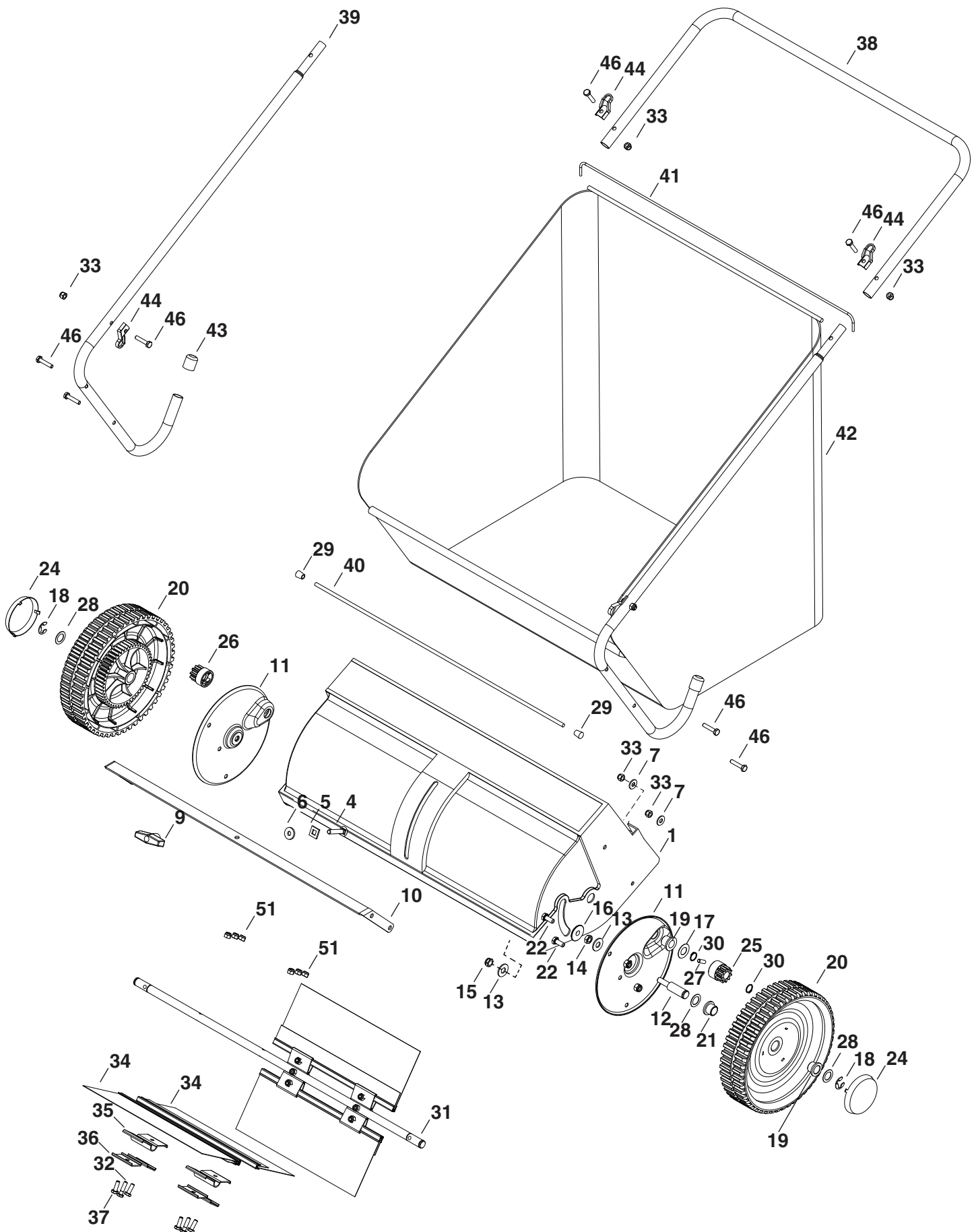


REPAIR PARTS FOR 45-02183 26" LEAF/LAWNSWEEPER



REPAIR PARTS FOR 45-02183 26" LEAF/LAWNSWEEPER

REF. NO.	PART NO.	QTY.	DESCRIPTION
1	44600	1	Housing
4	44326	1	Bolt, Carriage 5/16-18 x 1"
5	44680	1	Washer, Square Nylon
6	1543-69	1	Washer, Nylon 21/64
7	43088	4	Washer, 1/4"
9	43720	1	Knob, 5/16"
10	2-380BL3	1	Height Adjustment Strap
11	23866BL3	2	Dust Cover
12	44598	2	Axle
13	43070	6	Washer, 3/8"
14	44684	2	Jam Nut, 3/8-24
15	1038	2	Nylock Jam Nut, 3/8-24
16	44685	2	Shoulder Spacer
17	40001	2	Washer, .596 x 1.125 x .025
18	716-0106	2	"E" Ring, 5/8"
19	44679	2	Flange Bearing, .59
20	49946	2	Wheel Assembly
21	741-0249	4	Flange Bearing, .63
22	43182	4	Bolt, Hex 5/16-18 x 3/4"
23	47810	4	Nylock Nut, 5/16-18
24	2674-32	2	Black Hub Cap
25	48651	1	Pinion, L.H.

REF. NO.	PART NO.	QTY.	DESCRIPTION
26	48652	1	Pinion, R.H.
27	47046	2	Pin, Drive
28	44125	4	Flat Washer, .62 x 1"
29	44687	2	Plastic Cap, .207
30	1650-21	4	Retaining Ring, .594
31	23782	1	Brush Shaft
32	43661	4	Bolt, Hex 1/4-20 x 1"
33	47189	16	Nylock Nut, 1/4-20
34	44681	4	Brush, 13-1/4"
35	23580	4	Brush Retainer, Double Bracket
36	23581	8	Brush Retainer, Single Clip
37	43012	8	Bolt, Hex 1/4" x 3/4"
38	44603BL3	1	Upper Handle Tube
39	44595BL3	2	Handle Leg Tube
40	44683	1	Lower Bag Rod, 1/4" x 25-1/2"
41	45966	1	Bag Rod, Bent
42	44845	1	Hopper Bag
43	44688	2	Plastic Cap, 3/4"
44	44696	4	Bag, Rod Clip
46	1509-90	8	Bolt, Hex 1/4-20 x 1-1/4"
	3-566	1	Owner's Manual

SpeedPart *the fastest way to purchase parts* www.speedepart.com

REPAIR PARTS

Agri-Fab, Inc.
303 West Raymond
Sullivan, IL. 61951
217-728-8388
www.agri-fab.com

This document (or manual) is protected under the U.S. Copyright Laws and the copyright laws of foreign countries, pursuant to the Universal Copyright Convention and the Berne convention. No part of this document may be reproduced or transmitted in any form or by any means, electronic or mechanical, including photocopying or recording, or by any information storage or retrieval system, without the express written permission of Agri-Fab, Inc. Unauthorized uses and/or reproductions of this manual will subject such unauthorized user to civil and criminal penalties as provided by the United States Copyright Laws.